



Just Add Water Bag Mixes

With tools and full product demonstrations at your fingertips, Concrete Solutions® products by Rhino Linings ensure you are supported from start to finish.

The All New Packaging Features:

- Step-by-step product demonstration videos - ensure you get the job done right, the first time
- Mobile friendly links - allows for easy reference of demonstration videos and access to valuable resources including written instructions, product data sheets and MSDS files
- System picture gallery - view and share pictures of the finished product



Scan to view product demonstration, or visit www.concretesolutions.com

By  **Rhino Linings®**

BAG MIX PRODUCT

PART#

DESCRIPTION

EXAMPLE APPLICATION



Quick Set Patch Mix

#QSPM-45



Quick Set Patch Mix is a fast drying, non-shrink patching compound used to repair existing concrete surfaces. In most circumstances, areas can be opened to traffic within one hour of application. Application thickness: 1/2" – 0", or 1/2" to 1 1/2" with addition of 3/8" pea gravel.



Resurfacer (White or Gray)

#RMR-W
#RMR-G



Resurfacer is a thin overlay and texturing material used to provide a smooth, troweled, or broomed finish over concrete or other sound surfaces. It is also used as a bond coat just before spreading Stamp-Top, and as a base coat prior to applying Texture-Top, Trowel-Top, and Spray-Top resurfacing products. Application thickness: 1/8" – 0".



Spray-Top® Polymer Cement

#SP-5



Spray-Top is a polymer modified micro topping designed to be sprayed like a thin coat of paint over new and faded existing concrete, foam and other sound surfaces. It is used to recolor and restore old stamped concrete and can be used for decorative stencils and logos. Spray-Top can also be integrally colored, stained or dyed. Application thickness: 1/32" – 1/16".



Stamp-Top™

#SBMR-50



Stamp-Top is a 1/4" stampable overlay which can be applied over existing surfaces and stamped 1/4" – 1/2" thick. It can also be used for patching, leveling and repitching applications from 0 – 1/2" thick. Stamp-Top can be integrally colored, stained or dyed. Application thickness: 1/8" – 1/2".

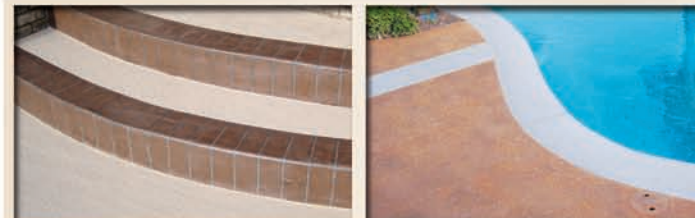


Texture-Top™

#TXT



Texture-Top is a polymer modified overlay designed to be sprayed or troweled to provide various knockdown and trowel textured finishes over concrete and other sound surfaces. It is excellent for pool decks, walkways, driveways, patios and more. Texture-Top can be integrally colored and is also used to create 1/8" stamp borders and decorative pieces. Application thickness: 1/8" – 0".



Trowel-Top™ Polymer Cement

#TT



Trowel-Top is a durable micro topping that bonds well to concrete and other surfaces. It provides an extremely smooth finish, similar to polished concrete or a skip-troweled texture, and is used to resurface floors, walls, countertops and more. Trowel-Top can be integrally colored and burned tightly with a trowel to produce a multi-colored marble finish. Trowel-Top can also be stained and dyed. Application thickness: 1/32" – 1/16".

