



Concrete Colorcoat Data Sheet

Part # CCOAT

DESCRIPTION: Concrete Colorcoat is a single component, water-based acrylic stain, designed to provide a uniform, protective, colored finish over regular concrete and Polymer Concrete applications. It can also be used on asphalt, masonry walls and previously painted surfaces. It exhibits good color retention after several years of exposure to sunlight and provides a flexible, tough film with resistance to staining, wear and abrasion.

TYPICAL USES: Its most popular use is to provide a stain resistant colored finish over residential and commercial driveways, patios, pool decks, walkways, basements, stadium supports, bridge structures, parking garages, block and stucco walls, precast, poured-in-place and tilt-up concrete. It is also used over the Concrete Solutions Polymer Concrete Trowel Knockdown (Spray Texture), Fine Broom and Swirl Pattern Finish. On driveways, it is recommended to apply a prime coat of Concrete Solutions MRB Primer. Sealcoat 1000 clear can be used as a topcoat for extra resistance to oil and tire marking.

FEATURES & BENEFITS:

- Can be applied by brush, 3/8 – 1/2" nap paint roller or airless sprayer using a .013 – .017 degree tip

CHEMICAL PROPERTIES:

	Result
Weight, per gallon	10 lbs
Solids by Volume / Weight	30% / 43%
Volatile Organic Compounds	1.86 lbs/gal (223 g/l)
Tack-free	30 min
Recoat	2 – 4 hrs
Walk on Time (light foot traffic)	12 hrs
Return to Service Time (vehicle traffic)	3 days
Coverage Rate per Gallon	- most surfaces - block walls
	200 – 300 sqft 75 – 150 sqft
Shelf Life - Unopened Containers	indefinite

SURFACE PREPARATION: The surface must be cleaned of all dirt, oil, grease, wax, paint and any other contaminants that may interfere with bonding. Scrub with detergent, acid wash, neutralize and pressure wash to clean and rinse. Concrete should feel like 120 grit sandpaper after etching.

MIXING INSTRUCTIONS: Apply full strength. Mix for 3 – 5 minutes to ensure color pigment is fully dispersed.

APPLICATION INSTRUCTIONS:

- **POLYMER CONCRETE FINE BROOM AND SWIRL FINISH:**
First apply a Bond Coat (Resurfacer) and Fine Broom or Swirl Pattern Finish using the Polymer Concrete. For the best results, pigment the texture coat of the polymer concrete the same color as the Concrete Colorcoat (that will be used later) using Integral Colors. When the polymer concrete texture coat dries within a few hours, Concrete Colorcoat



Apply a Bond Coat (Resurfacer) of Polymer Concrete over the surface.



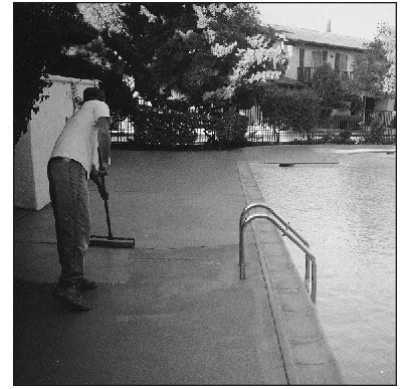
Apply a Fine Broom Finish or Swirl Pattern Finish over the dry Bond Coat (Resurfacer).

CONCRETE SOLUTIONS® CONCRETE COLORCOAT (continued):

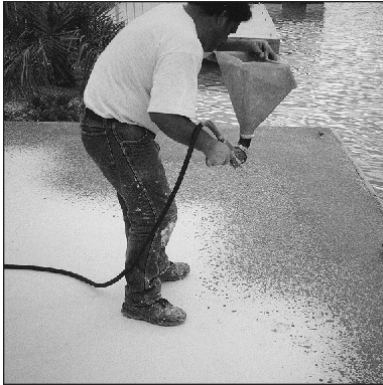
can be applied. Concrete Colorcoat should be used straight (undiluted) and applied using an airless sprayer or 3/8 – 1/2" nap paint roller. When the first coat of color dries, usually within 1 – 2 hours, a second coat can be applied if needed. The second coat should also be applied straight to achieve the best color uniformity and stain resistance. On driveways it is recommended to apply Sealcoat 1000 clear as a topcoat for extra resistance to oil and tire marking.

• **POLYMER CONCRETE SPRAY TEXTURE FINISH:** After applying a Bond Coat (Resurfacer) and a Spray Texture Finish (Texture-Top™) of the Polymer Concrete, the next step is to apply two coats of Concrete Colorcoat to achieve a uniform, stain resistant finish. When colorcoating over the Spray Texture Finish both coats of the Concrete Colorcoat should be applied without dilution to achieve the best color uniformity and maximum chemical and stain resistance. The best method for applying the Concrete Colorcoat over the Spray Texture System is a 1/2 - 3/4" nap paint roller. Roll as thin as possible to achieve the best coverage rate. For cleaning hard water mineral stains off of the Concrete Colorcoat, especially around pool decks, use Heavy Duty Concrete Cleaner (under Miscellaneous Products on price list).

Note: When applying Concrete Colorcoat on residential driveways it is recommended to apply Sealcoat 1000 as a topcoat sealer for extra resistance to tire marking and oil stains.



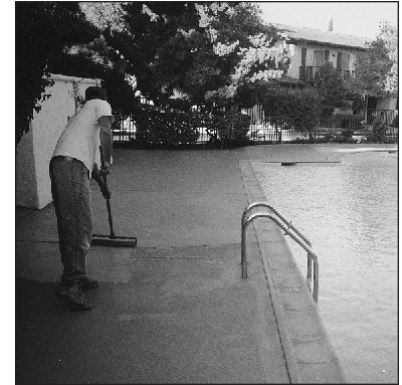
Apply Concrete Colorcoat undiluted using an airless sprayer or 3/8 – 1/2" painter roller. Apply a topcoat of Sealcoat 1000 clear on driveways.



Spray the Spray Texture Mix (Texture-Top) using a hopper gun sprayer.



Trowel the sprayed Spray Texture Mix to achieve the desired texture.



Apply two coats of Concrete Colorcoat undiluted using a 1/2 – 3/4" nap roller.

• **COLORCOATING REGULAR CONCRETE WITH CONCRETE COLORCOAT:** Concrete Colorcoat can be applied directly over regular concrete that has been properly cleaned, degreased and etched. If desired, MRB Primer can be used before applying Concrete Colorcoat for extra resistance to moisture vapor transmission from below the surface. For etching, use muriatic acid mixed with 4 parts water. Neutralize the acid wash using 10 parts water to 1 part household ammonia. Rinse thoroughly with water. After etching, the surface should feel like 120 grit sandpaper or a second etching will be required. New concrete must be at least 45 days old. If mold, mildew or fungus is present, kill and remove with a solution of one-cup household bleach to one gallon of water.

NOT RECOMMENDED FOR: Concrete that is less than 45 days old.

COLOR OPTIONS: 30 standard colors. Custom colors are also available by special order.

HOW SUPPLIED: Concrete Colorcoat is available in 1 gallon and 5 gallon pails.

STORAGE: Concrete Colorcoat should be stored 45° – 100°F (7° – 38°C). Do not let freeze.

SLIP/FALL PRECAUTIONS: Concrete Colorcoat and Sealcoat 1000 can become slippery when wet. It is up to the end user to determine the suitability of the for their particular application. Slip resistant granules such as #80 or coarser white aluminum oxide can be broadcast into the wet to provide whatever degree of slip resistance is necessary. Concrete Solutions or its sales agents will not be responsible for injuries incurred in a slip fall situation.

CONCRETE SOLUTIONS® CONCRETE COLORCOAT (continued):

SAFETY PRECAUTIONS: Health Considerations: Consult the Rhino Linings® Safety Data Sheets (SDS)

Chemical systems require the use of proper safety equipment and procedures. Please follow the Rhino Linings® product SDS and Safety Manual for detailed information and handling guidelines.

For Your Protection: The information and recommendations in this publication are, to the best of our knowledge, reliable. Suggestions made concerning the products and their uses, applications, storage and handling are only the opinion of Rhino Linings Corporation. Users should conduct their own tests to determine the suitability of these products for their own particular purposes and of the storage and handling methods herein suggested. The toxicity and risk characteristics of products made by Rhino Linings Corporation will necessarily differ from the toxicity and risk characteristics developed when such products are used with other materials during a manufacturing process. The resulting risk characteristics should be determined and made known to ultimate end-users and processors.

Because of numerous factors affecting results, **Rhino Linings Corporation makes no warranty of any kind, express or implied**, other than that the material conforms to its applicable current Standard Specifications. Rhino Linings Corporation hereby disclaims any and all other warranties, including but not limited to those of merchantability or fitness for a particular purpose. No statements made herein may be construed as a representation or warranty. The liability of Rhino Linings Corporation for any claims arising from or sounding in breach of warranty, negligence, strict liability, or otherwise shall be limited to the purchase price of the material.

©2014 Rhino Linings Corporation. All rights reserved.



Rhino Linings Corporation

9747 Businesspark Avenue, San Diego, CA 92131
858-450-0441 • Fax 858-450-6881
1-800-422-2603
www.rhino linings.com

Concrete Solutions by Rhino Linings

7455 Carroll Road, San Diego, CA 92121
1-800-232-8311 • Fax 858-566-4346
www.concretesolutions.com